

**Criccieth** is located on the southern coast of the Llyn Peninsula and has the best of both worlds, as far as the weather is concerned. The long arm of the Llyn Peninsula shelters it from the worst of the prevailing weather from the west; it also traps the warm waters of the Gulf Stream to create a climate completely different from that of the mountains further inland.

The castle is well worth a visit, walk in the footsteps of Welsh history. On a clear day, from the castle mound you can see St. David's Head in one direction, and St. Tudwal's island in the other - the whole magnificent sweep of the Cambrian Coast is also visible. As well as Criccieth Castle, there are many other castles within easy reach including Harlech, Conwy, Caernarfon, Penrhyn.

Other interesting historic monuments in the vicinity include St. Cybi's Well; Penarth Fawr Medieval House and many more which are featured in the CADW brochures provided.

There are several **National Trust** properties in the area, including **Bodnant Gardens** with its famous Laburnum Arch, **Plas yn Rhyw**, **Penrhyn Castle**, and **Plas Newydd** on Anglesey.

Criccieth is a winner of the **Town in Bloom** competition for the whole of Europe, and don't miss the world-famous award-winning Cadwalader's Ice cream! There are numerous good eating places here and the Criccieth Musical Festival is held every June.

The surrounding area is full of tourist attractions, for example, the Welsh Slate Museum at Llanberis, the popular marina in Pwllheli, Porthmadog, the famous Italianate village at Portmeirion (scene of filming the cult T.V. series "The Prisoner"), the famous and spectacular ride on the Ffestiniog Steam Railway, Mount Snowdon with its summit railway and the beautiful Snowdonia National Park itself.

# How to find us



## BARN & STABLES FEATURE.....

- ◆ Washer, Microwave, Dishwasher etc.
- ◆ Night Storage Heating and convectors
- ◆ Electricity by meter reading
- ◆ Quality Furnishings & Pine Beds
- ◆ Colour T.V. with Freeview Digital, DVD player & Radio / CD / tape
- ◆ Bed Linen included
- ◆ Ample safe Parking spaces
- ◆ Panoramic views
- ◆ Handy for town and Information Centre
- ◆ Close to seaside and countryside
- ◆ Pets by arrangement
- ◆ Fishing on estate and Golf nearby

## THE BARN & THE STABLES



Two charming traditional Welsh stone cottages with glorious panoramic views, close to Criccieth and the safe sandy beaches of the Llyn peninsula.

ALL ENQUIRIES TO:-  
**Mrs. C. Robison**  
**28, Trem y Ffridd**  
**Bala, Gwynedd,**  
**North Wales LL23 7DG**



**Telephone: 01678 521480**

**e-mail: [chillout@cricciethcottages.co.uk](mailto:chillout@cricciethcottages.co.uk)**  
**web site: [www.cricciethcottages.co.uk](http://www.cricciethcottages.co.uk)**



These charming cottages, with their thick stone walls and wealth of exposed beams, have been sensitively converted and modernised to offer every convenience for the holidaymaker.

The cottages are surrounded by fields and enjoy beautiful elevated views of Snowdonia, coastal glimpses and a lovely quiet rural position within the 240 acre Eisteddfa country Estate. Although secluded and peaceful, the cottages are not isolated, being only 1.5 miles from the amenities and beaches of the lovely seaside resort of Criccieth. There are many other beautiful sandy beaches and well-known resorts on the Lleyn peninsula, within easy reach. You can play golf at Criccieth, where discounts are available, and on several other golf courses within 8 miles.

The cottages are approached by a private tree-lined drive through the estate and well away from roads.

Eisteddfa Estate is steeped in history and has the daughter of a former Prime Minister among its previous owners, her descendents still own and live on the estate. Two miles down the road, is Llanystumdwy, the boyhood home of Criccieth's most famous son, David Lloyd George. A visit to the Museum and riverside grave is a must, but many people also like to walk along the banks of the River Dwyfor, where the Statesman spent his boyhood days.

There are 5 fishing lakes (a safe distance but visible from the cottages) offering coarse or trout fishing by the day for a reasonable charge.

Walking and cycling are also popular activities with the ever popular Snowdonia countryside nearby, and such well-known places as Beddgelert (with its famous legend of the dog), Llanberis with its "Electric Mountain" and start of the famous Snowdon railway—an easy way to the summit! (booking recommended in summer).



You will find lots of brochures and information in the cottages to help you plan your full days out.

Both cottages feature modern double glazing, Night Storage and convector heaters to provide year-round comfort. Good quality televisions with Freeview, DVD player & a cd/tape/radio music centre are also standard equipment.

There is adequate safe parking at the rear of the properties.

## THE BARN



2 bedrooms, sleeps up to 4 + cot

The Barn has been converted from a traditional Welsh stone building into a lovely cottage for four. There is a paved patio with picnic table for outdoor meals plus a garden at the rear. Guests comment on the "homely" feel of this property which is perfect for couples (a great hideaway for honeymooners!) or a small family.

The Ground Floor accommodation would suit those who prefer to avoid climbing stairs, and consists of:-

A comfortable, spacious sitting room, with dining area, looks out either through the attractive French Doors or the pretty deep window, over the patio, garden and the fields of the Estate towards the coast at Criccieth (glimpses).



A double bedroom, a well-equipped kitchen with a breakfast table, electric cooker, microwave, fridge / freezer, dishwasher and washing machine, fabulous mountain views.

Also on the ground floor is the bathroom with an electric shower over the bath, pedestal basin and a WC. plus electric heater and shaver point.



Upstairs is the spacious twin bedroom which features original beams and has views.

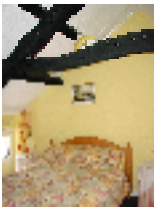
**Bed linen included, electricity by meter reading  
1 dog per property is welcome by prior arrangement.**

## THE STABLES



3 bedrooms, sleeps up to 6 + cot

The Stables is an attractive stone building which has been sensitively converted from the old stable block into a comfortable holiday home for 6 whilst retaining the original character. If you like old beams, you will not be disappointed! The conservatory is a popular feature. There is a small slate paved patio, with picnic table for outdoor meals plus a private grassed area at the front of the property.



On the **Ground Floor** are:-



The large **conservatory** with dining facilities and views over the Eisteddfa Estate towards the coast with the estate's established fishing lakes in the foreground

Comfortable **sitting room** looking out through the conservatory. Off this room is the well-equipped breakfast **kitchen** with a window looking over the patio and **views** towards the coast (glimpses) An electric cooker, microwave, fridge/freezer, dishwasher and washing machine are part of the full specification. Also on the ground floor is the delightful **bunk bedroom** that children love, with full-size 3ft. pine bunk beds that can also accommodate adults if your party make-up requires.

The **bathroom** [opposite this bedroom], has an electric shower over the bath, pedestal basin and WC. plus electric heater and shaver point

**Upstairs** is a **twin bedroom** and the **master double bedroom** (both have beams) which has an **en-suite with shower cubicle, toilet & handbasin**.